

**ITEM 4.                    ITEM FOR COMMITTEE INFORMATION – TEMPORARY ROAD  
CLOSURE – KIPPAX STREET SURRY HILLS**

**TRIM RECORD NO:    2016/401806**

**RECOMMENDATION**

It is recommended that the Committee note the change of date of the temporary road closure of Kippax Street, between Waterloo and Lacey Streets, Surry Hills to Saturday 13 August 2016 from 6.30am to 6pm and the alternative date in case of inclement weather as Saturday 20 August 2016.

**VOTING MEMBERS FOR THIS ITEM**

<b><i>Voting Members</i></b>	<b><i>Support</i></b>	<b><i>Object</i></b>
City of Sydney		
Roads and Maritime Services		
NSW Police – Surry Hills LAC		
Representative for the Member for Newtown		

**DECISION**

**BACKGROUND**

The City has received a request to change the date for the temporary road closure of Kippax Street, between Waterloo and Lacey Streets, Surry Hills to Saturday 13 August 2016 from 6.30am to 6pm and the alternative date in case of inclement weather as Saturday 20 August 2016.

**COMMENTS**

The Committee at its meeting on 15 June 2016 endorsed the temporary closure of Kippax Street for 6 August 2016 with alternative date as 13 August 2016. The Applicant has informed that the closure was postponed on 6 August 2016 due to unforeseen circumstances.

Agreement has been obtained from the Roads and Maritime Services, Transport Management Centre and the Police for the new closure date and the alternative date.

**CONSULTATION**

The Applicant notified affected stakeholders as stipulated in Schedule C.

**FINANCIAL**

All costs associated with the proposed closures were borne by the Applicant.

**ATTACHMENTS**

Item for Committee Information – Temporary Road Closure – Kippax Street Surry Hills

Ajay Nayyar, Traffic Works Coordinator

**Date:** 03/04/2016 **Author:** Steve Spiteri **Project:** MADE 119 Kippax St Surry Hills **WMS invarior.com**  
**RMS License:** 2452057913 **Onsite Contact:** Steve 0418418181

**Comments:**

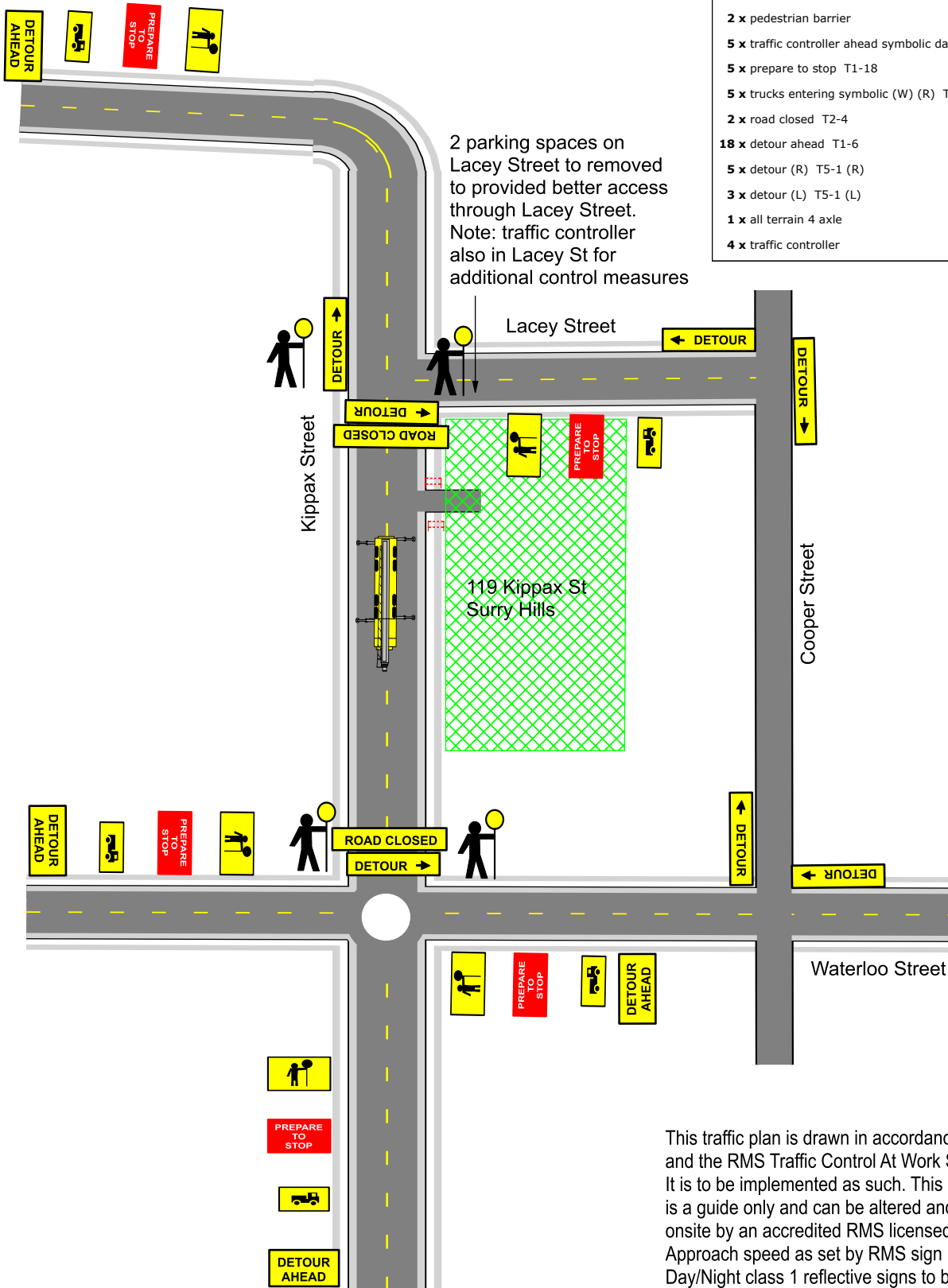
1. traffic control plan for site crane erection
2. full road closure with detour under strict traffic management.
3. traffic controller to monitor and maintain pedestrian safety at all times and to close footpath with expandable barriers for crane lift.



**Manifest**

- 2 x pedestrian barrier
- 5 x traffic controller ahead symbolic day (yellow) T1-200-2\*
- 5 x prepare to stop T1-18
- 5 x trucks entering symbolic (W) (R) T2-25(R)
- 2 x road closed T2-4
- 18 x detour ahead T1-6
- 5 x detour (R) T5-1 (R)
- 3 x detour (L) T5-1 (L)
- 1 x all terrain 4 axle
- 4 x traffic controller

2 parking spaces on Lacey Street to be removed to provided better access through Lacey Street.  
 Note: traffic controller also in Lacey St for additional control measures



This traffic plan is drawn in accordance with AS1742.3 and the RMS Traffic Control At Work Sites manual. It is to be implemented as such. This 'traffic control plan' is a guide only and can be altered and signed onsite by an accredited RMS licensed person. Approach speed as set by RMS sign posted limits. Day/Night class 1 reflective signs to be used. RMS accredited traffic controllers to be employed. All traffic controllers to wear approved hi visibility personal protective equipment.

